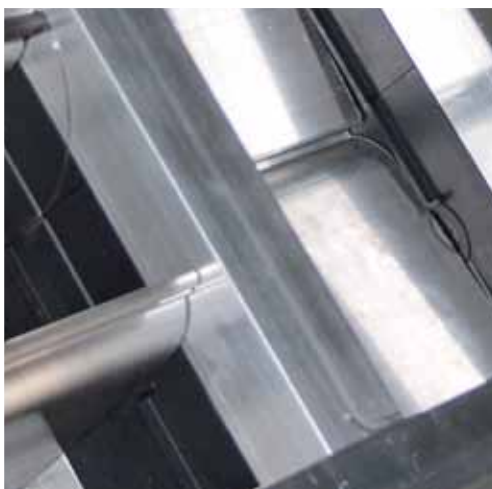
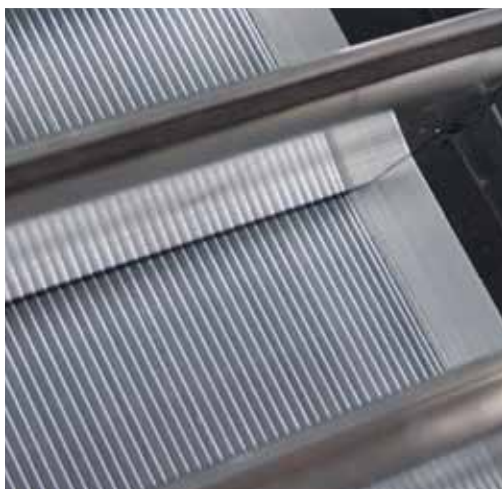
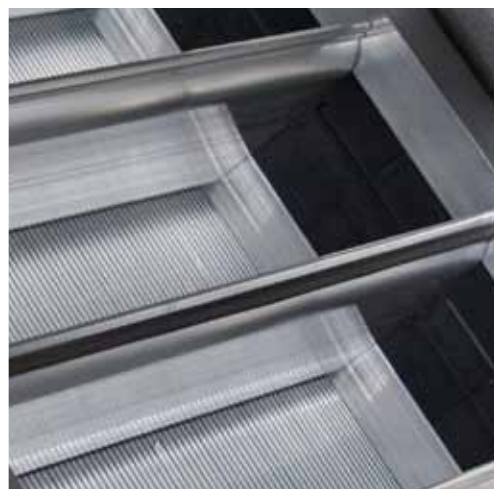
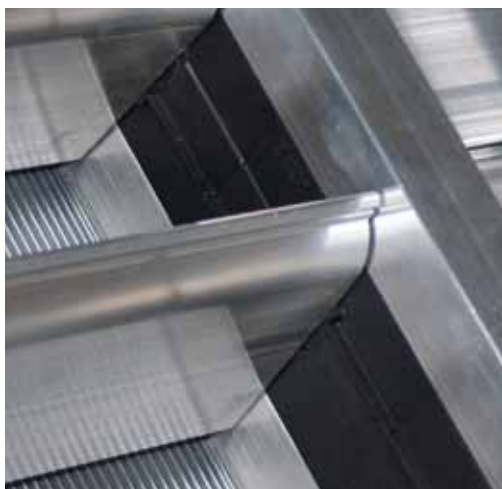
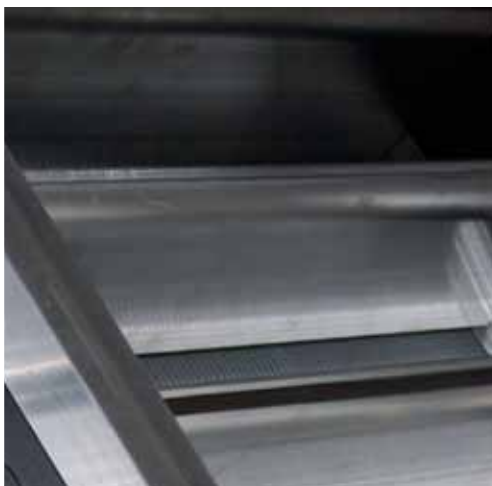


# GOLD+ INVENTILATION

---

---



# New GOLD PX with increased energy efficiency



## Next generation of heat exchanger

With a newly developed cross flow plate heat exchanger, the efficiency of the GOLD PX is taken to a whole new level.

There are also different versions of heat exchanger to choose from. This means you can fine tune the performance of your GOLD unit according to the requirements of your project, whether you wish for maximized temperature efficiency or minimized pressure drop. Either way, you win!



## Two new sizes: 07 and 11

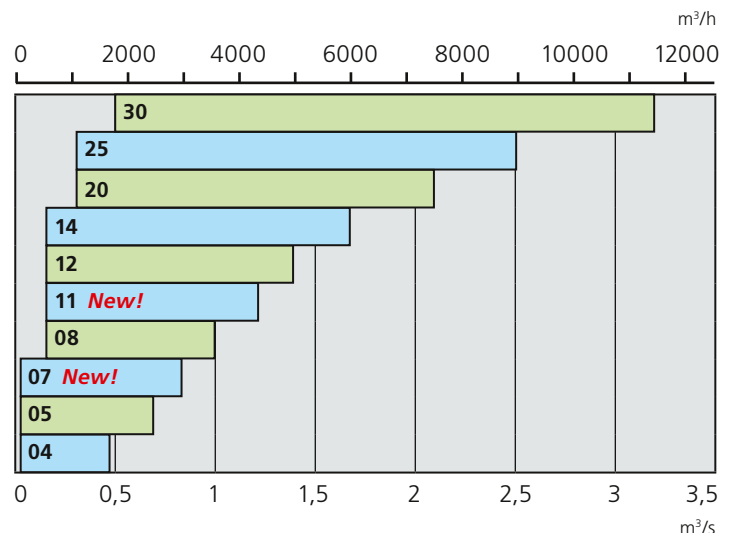
With the two new sizes, there are even better options to choose from in the lower end of the capacity range. This makes it easier to find a size that fits your project nicely, avoiding installing an oversized unit.

With a better matching size, the power consumption may be reduced, which is extra important for demand controlled ventilation applications, where the required air flow will vary and a too big air handling unit will be inefficient.



## Great annual efficiency rate

The new GOLD PX line provides higher efficiency in any given point of operation, but what really matters is the annual efficiency. With smart use of humidity and temperature sensor data, the GOLD PX heat exchanger by-pass is controlled to minimize the de-frosting cycles, providing great performance, all year round.



# Energy saving air condition news

## + COOL DX Top chiller

New space saving direct expansion chiller customized for the GOLD Top air handling unit.

The coil location in the chiller facilitates cooling recovery via the GOLD rotary heat exchanger. This means that huge yearly energy savings can be made compared to other similar chillers.

COOL DX Top Chiller is a Plug and play chiller, integrated with the GOLD control system.

COOL DX Top chiller is available in sizes 04–12 with cooling capacity 6–22 kW for the corresponding GOLD Top sizes.

The chiller itself works energy efficient in a 3-step mode:

- 1 - Low capacity requested, small compressor only
- 2 - Medium capacity requested, big compressor only
- 3 - High capacity requested, both compressors



## + CELEST+ air/water chiller

New energy efficient air/water chiller with DC inverter controlled compressor as standard. The compressor is running at just the right speed in order to produce exactly the required chilled water capacity. This means significant energy savings compared to a traditional compressor that operates on a switch on/switch off basis.

The chiller is easily controlled from the GOLD control system via SMART Link. The CELEST+ has 6–26 kW stepless cooling capacity at -10°C to +46°C ambient temperature. In reversible mode the heating capacity is 7–28 kW at +40°C to -18°C ambient temperature.

## + MAROON 2 air/water heat pump

New energy efficient air/water heat pump with several options for customized usage. Domestic hot water management is included as standard via 3-way valve or via optional plate heat exchanger.

MAROON 2/MT can produce hot water up to 60°C down to -16°C ambient temperature. MAROON 2/HT, that use vapor injection compressors, can produce hot water up to 65°C down to -20°C ambient temperature.

The heat pump is easily controlled from the GOLD control system via SMART Link. Heating capacity is 6–42 kW with single compressor, 45–80 kW with double compressors.



# The GOLD family

A GOLD air handling unit is the ideal center point for your indoor climate system. Highly efficient operation and smart controls in one package. Together with the wide range of accessories the GOLD also offers great flexibility.

	<b>GOLD RX</b>	<b>GOLD PX</b>	<b>GOLD CX</b>	<b>GOLD SD</b>	<b>GOLD LP</b>
<b>Sizes</b>	04-120	04-30	35-120	04-120	05-08
<b>Heat Recovery</b>	RECOeconomic rotary heat exchanger	Cross-flow plate heat exchanger	Coil heat exchanger	Coil heat exchanger (optional)	RECOeconomic rotary heat exchanger
<b>Fans</b>	GOLD Wing+	GOLD Wing+	GOLD Wing+	GOLD Wing+	GOLD Wing
<b>Fan motors</b>	EC	EC	EC	EC	EC
<b>Control System</b>	IQnomic Premium	IQnomic Premium	IQnomic Premium	IQnomic Premium	IQnomic Standard
<b>Integrated control of chillers and heat pumps</b>	Yes	Yes	Yes	Yes	Yes
<b>Web communication via Network</b>	Yes	Yes	Yes	Yes	Yes
<b>Ready for communication with main control system</b>	Yes	Yes	Yes	Yes	Yes
<b>External colour</b>	Beige NCS S2005-Y 30R	Beige NCS S2005-Y 30R	Beige NCS S2005-Y 30R	Beige NCS S2005-Y 30R	White NCS S0502-G
<b>Top connection</b>	Fully, RX Top 04-12 Partial, RX 04-120	Partial, 12-30	Partial, 35-120	Partial, 14-120	–
<b>Duct connection with Full face</b>	Yes	Yes	Yes	Yes	Yes
<b>Accessories for outdoor installation</b>	Yes	Yes	Yes	Yes	–
<b>Eurovent certificate</b>	AHU-06-06-319	AHU-06-06-319	AHU-06-06-319	AHU-06-06-319	AHU-06-06-319

## Facts about GOLD

GOLD is the name of a series of complete air handling units for comfort ventilation in several sizes for airflows up to approximately 14 m<sup>3</sup>/s (50 400 m<sup>3</sup>/h).

The unit has energy-efficient fans that can cope with the increased demands for energy efficiency. The GOLD has built-in IQnomic type control equipment with a large number of functions, including communication.

### Accessories

A complete range of accessories is available for GOLD, such as dampers, air heaters, air coolers, recirculation sections, chillers and heat pumps.. Accessories for outdoor installation are available for all models apart from LP.

