

Installation Instructions for the TBLZ-1-47 Electronic Timer GOLD/COMPACT/MIRUVENT

1. General

The TBLZ-1-47 electronic timer consists of a front plate with spring-back pushbutton and indicating light-emitting diode on the front. A circuit card, connection terminals and a potentiometer for setting timer periods (0 – 6 hours) are secured to the rear plate.

The kit also includes a mounting frame.

2. Range of Application

The timer is used for prolonged high-speed or low-speed operation outside ordinary in-operation periods preset in the internal timer (time switch) of the air handling unit/power roof ventilator. The timer can also be used for controlling the air handling unit/power roof ventilator when the internal timer is not in use.

3. Operation

The air handling unit/power roof ventilator is controlled to the appropriate operating conditions via impulses from the timer. The indicating light-emitting diode is lit when the changeover relay switches on the signal to the air handling unit's/power roof ventilator's input for external high speed or external low speed. The relay is switched on and the indicating LED is lit until the preset period has expired. The timer function can be interrupted by pressing the pushbutton once more. This is indicated when the LED is no longer lit.

4. Installation

For flush mounting in electrical boxes with a mounting dim. of 60 mm centre to centre.

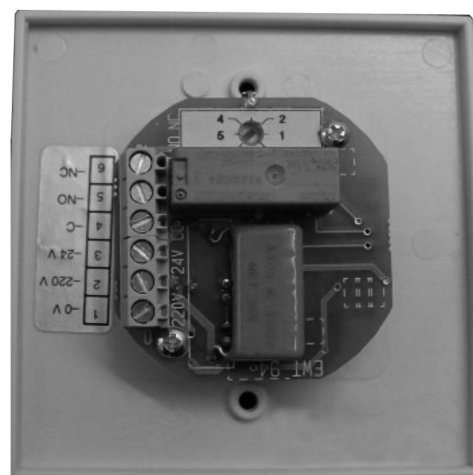
The spacer frame supplied is used for surface mounting.

5. Technical Data

Supply voltage	24/220 VAC
Degree of protection	IP 20
Colour	White
Indication	Green
Dimensions:	
Push button	90 x 90 mm
mounting	
frame (W x H x D)	100 x 100 x 30 mm



Front



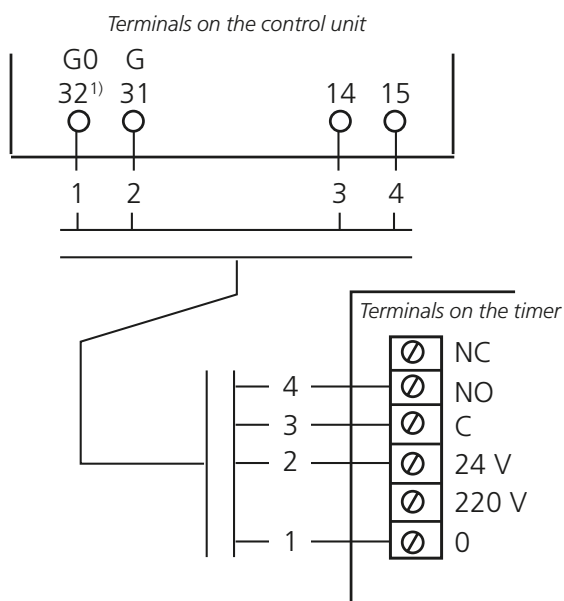
Rear

6. Electrical Connections.

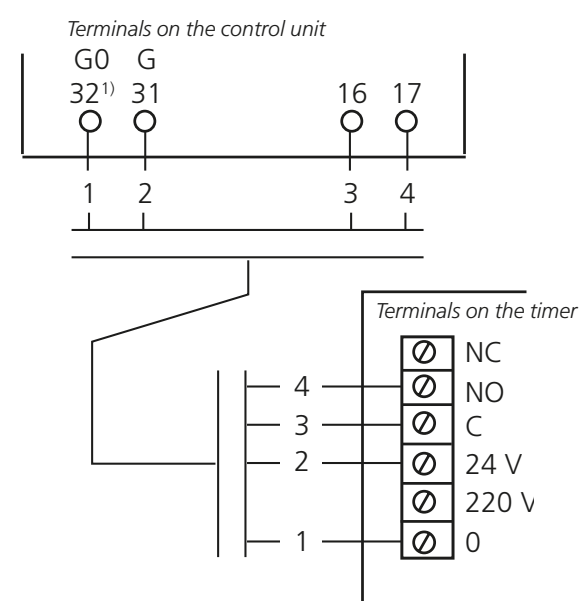
The electrical connections should be wired by a qualified electrician in accordance with local electrical safety regulations.

GOLD RX/PX/CX/SD, version E/F

Low speed



High speed

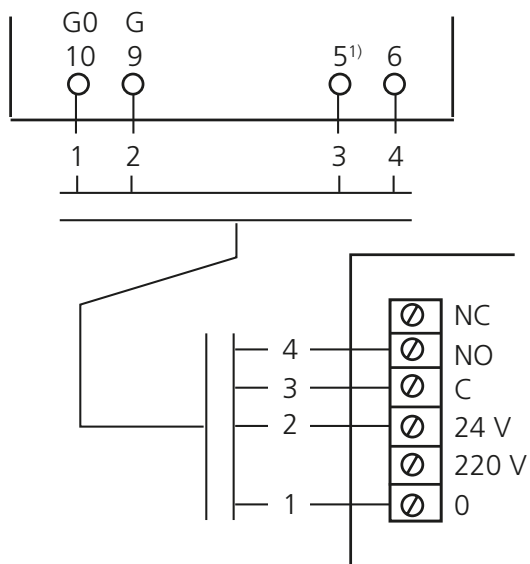


¹⁾ Applies to GOLD size 100/120 only:

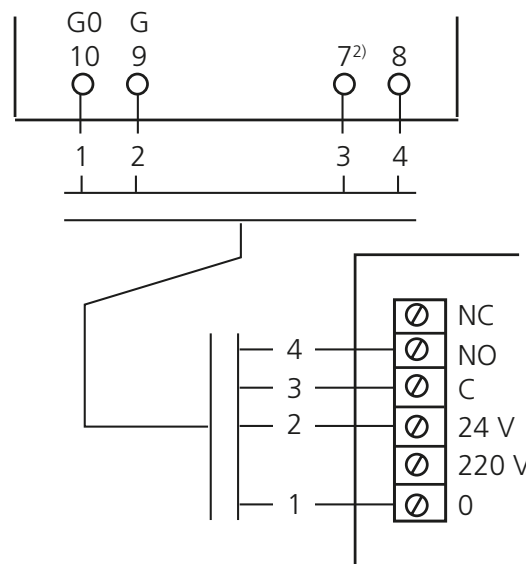
If the total load on wiring terminals 31-32 is higher than 16 VA, you should wire the leads to terminals 201 (G) and 202 (G0). Wiring terminals 201-202 can be loaded with a total of max. 48 VA.

GOLD LP/COMPACT

Low speed



High speed



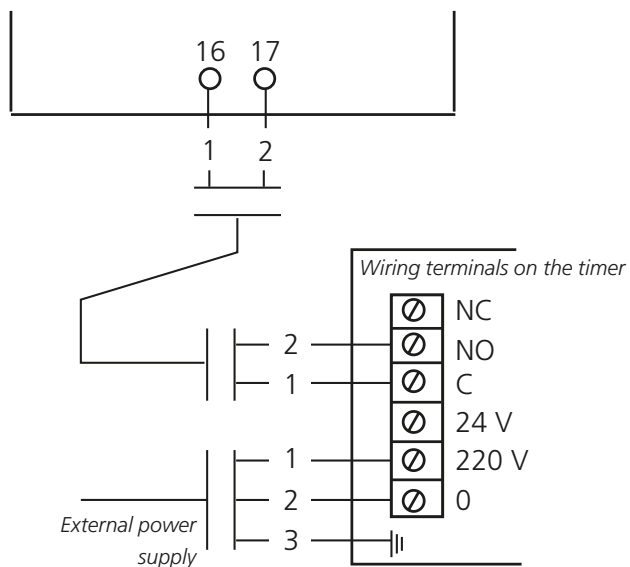
¹⁾ The external low-speed function must be selected in the micro terminal. See the Installation and Maintenance Instructions.

²⁾ The external high-speed function must be selected in the micro terminal. See the Installation and Maintenance Instructions.

MIRU Control

Low speed

Wiring terminals on the control unit



High speed

Wiring terminals on the control unit

