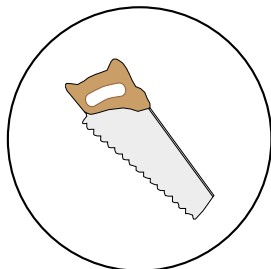


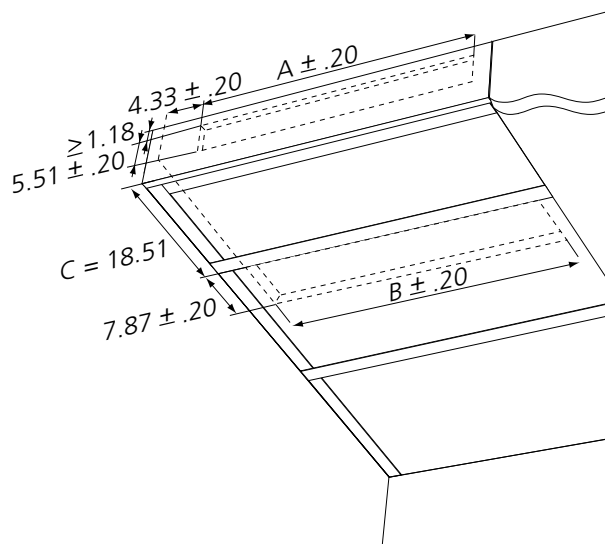
PARAGON b

Installation - Commissioning - Maintenance

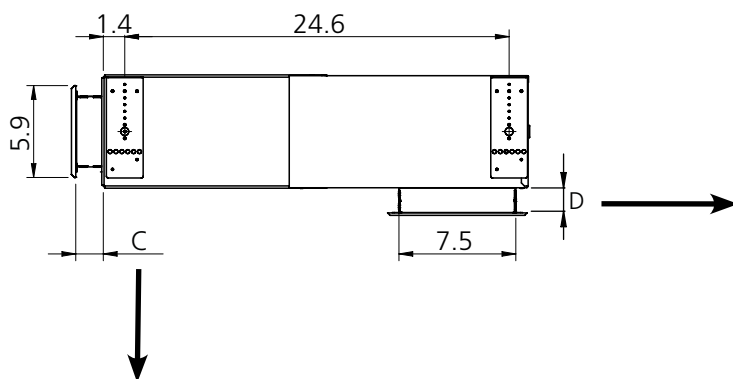
2015-06-23



Size	L	A	B
900	35	30.5	34.4
1100	43	38.4	42.3
1300	51	46.3	50.2
1500	59	54.1	58.1

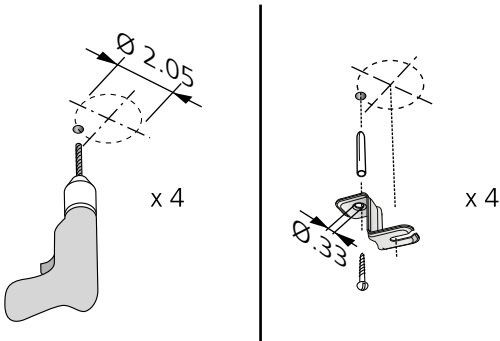
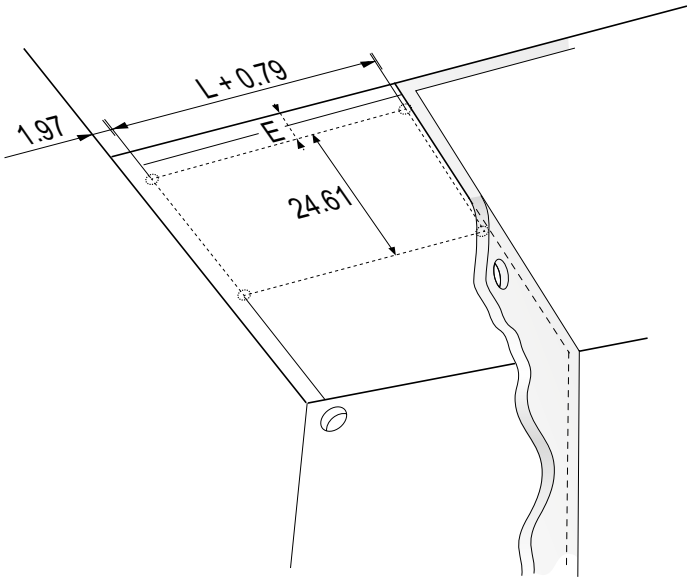





PARAGON b

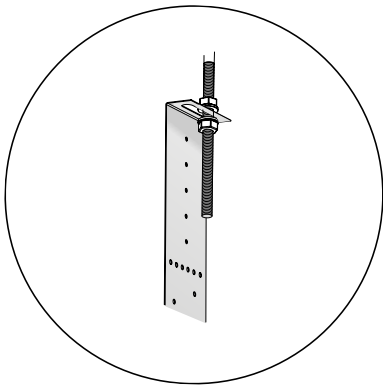
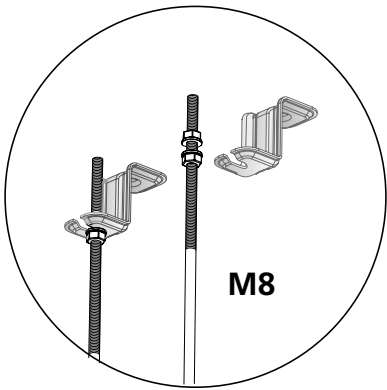


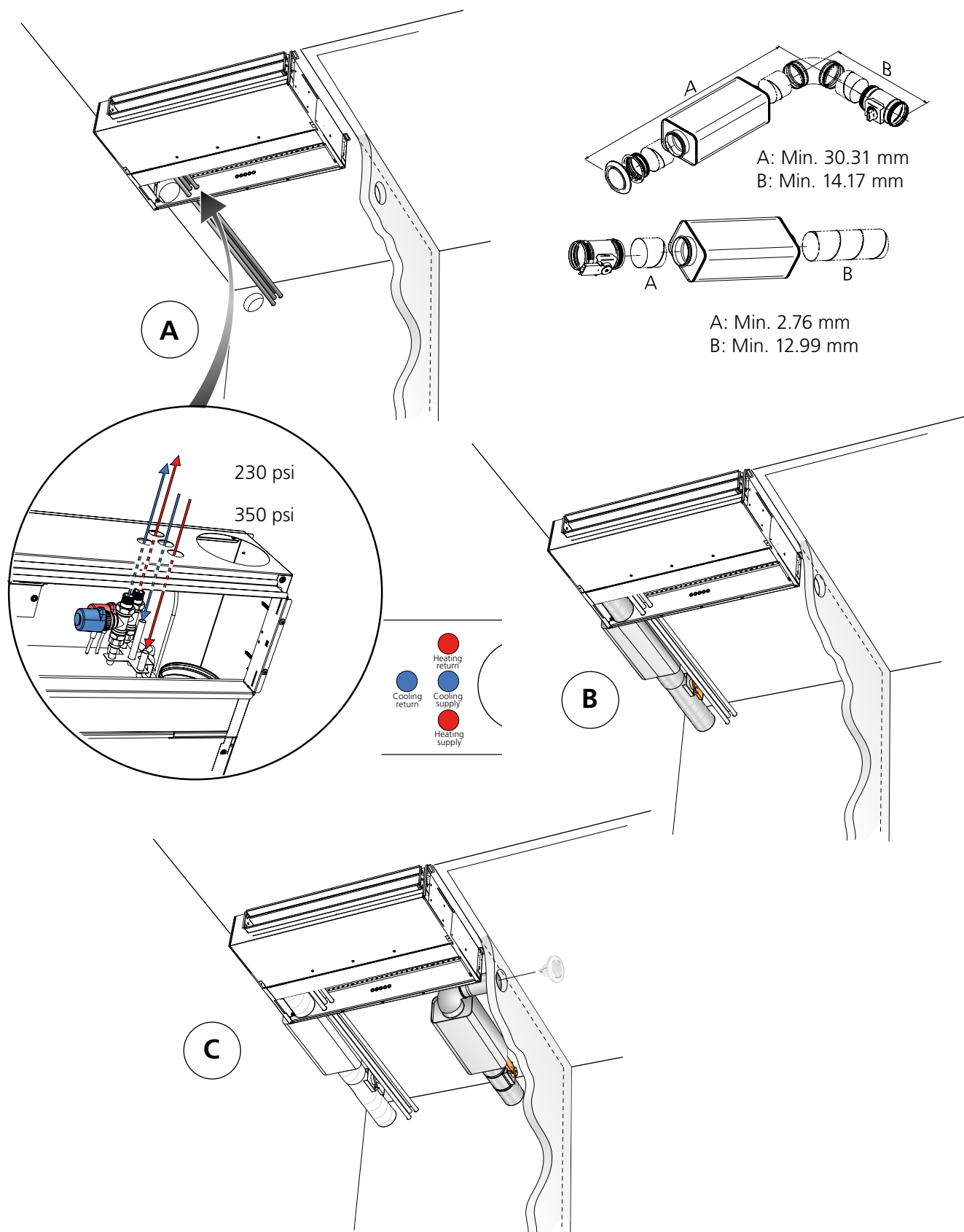
PARAGON b T-RG	PARAGON b T-OE-RG
Return air grille incl.	
Spigot D = 0.51" - 1.38"	Extra spigot D = 1.38" - 2.76"

PARAGON b T-SG	PARAGON b T-OE-SG	PARAGON b T-TE-SG
Supply air grille incl.		Supply air grille incl.
Spigot C = 1.77"	Extra spigot C = 3.54"	Telescopic spigot C = 3.94" - 5.51"

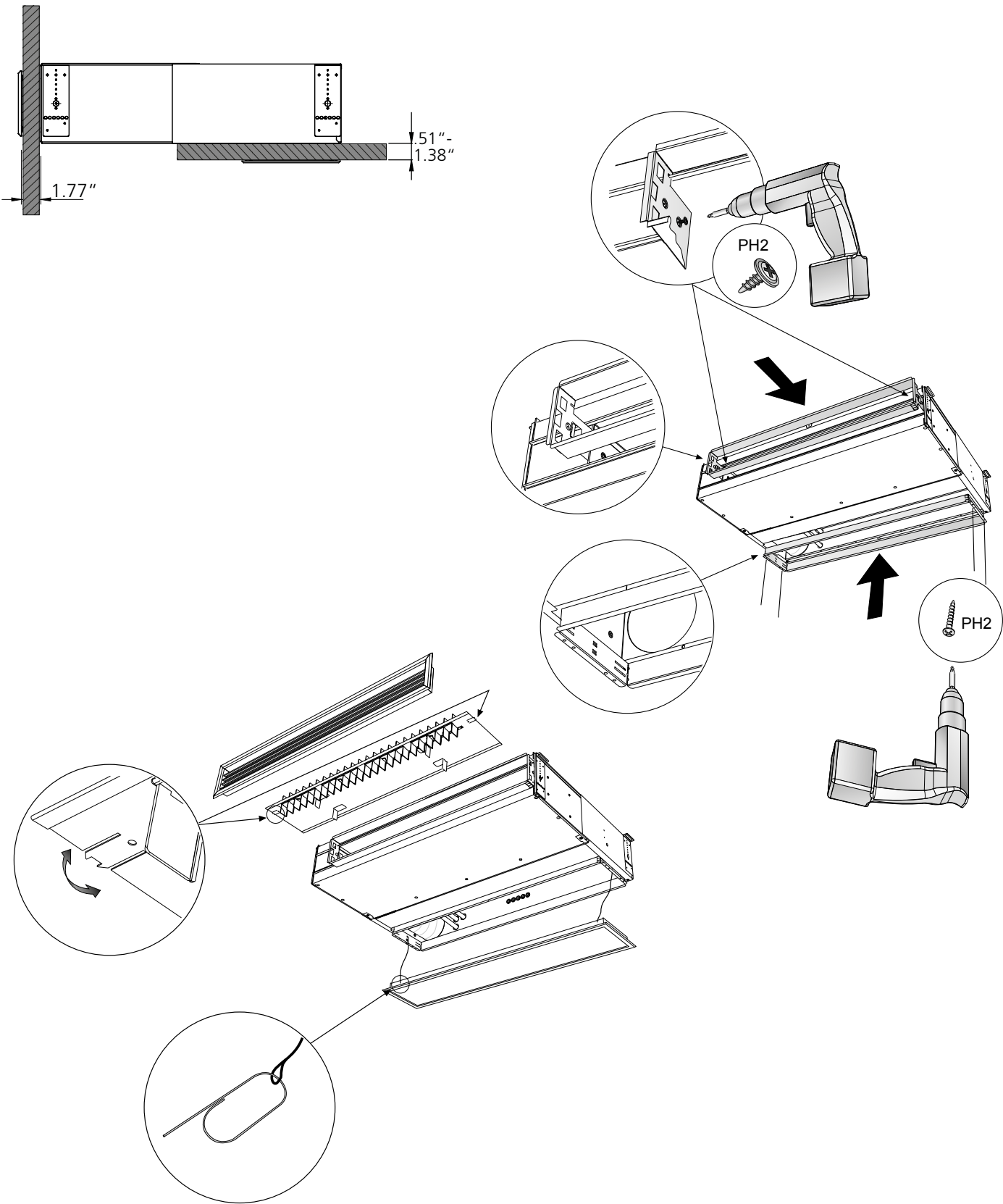


		
Spigot E = 3.15"	Extra spigot E = 4.92"	Telescopic spigot 5.31" - 6.89"

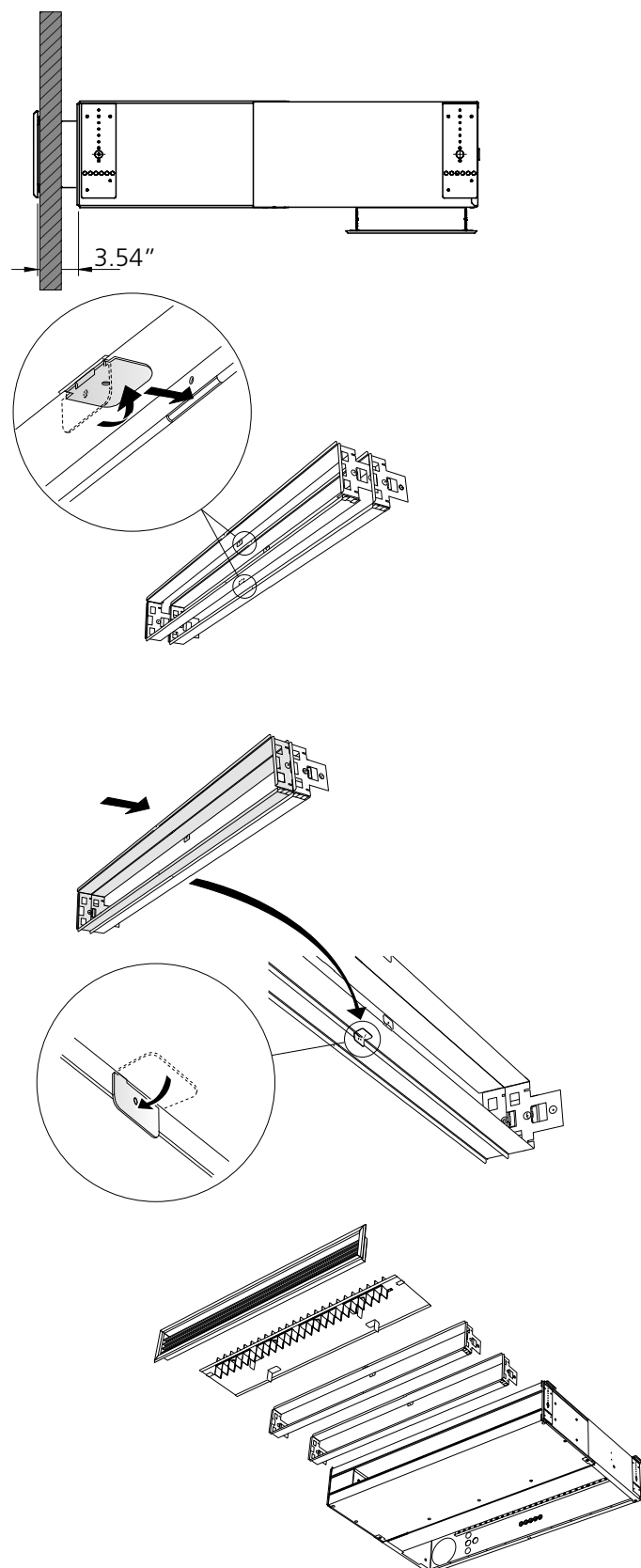




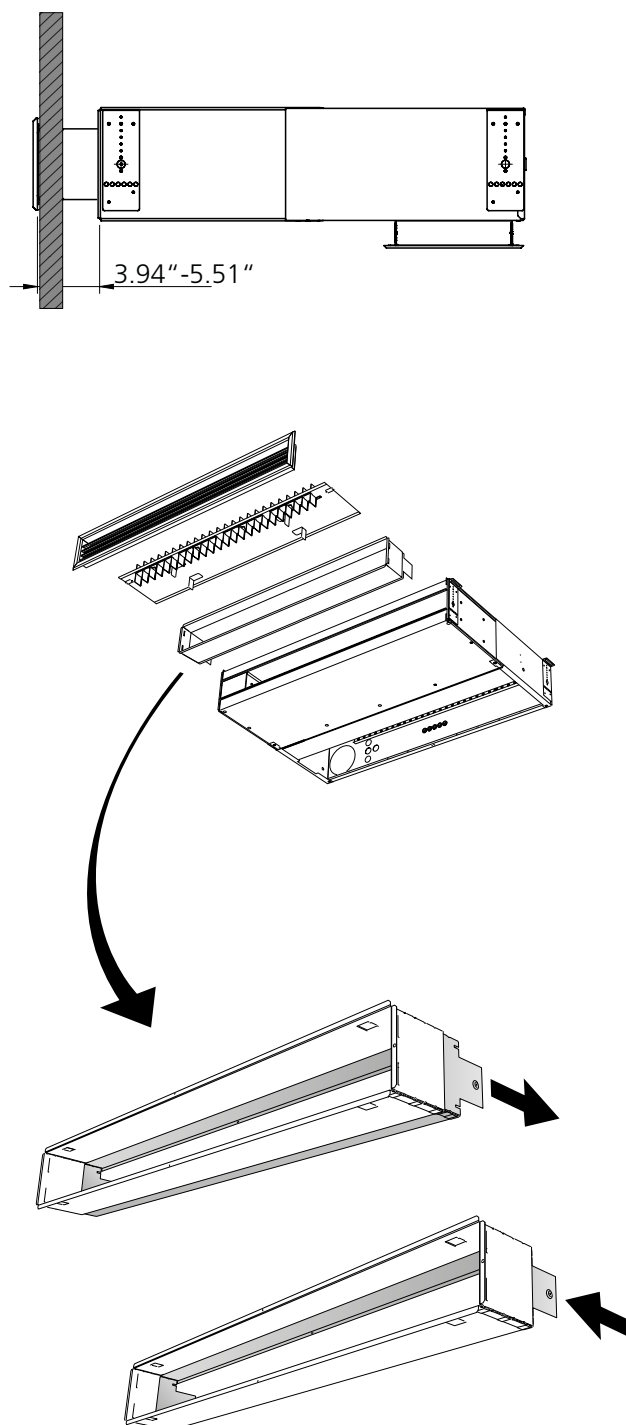
Standard



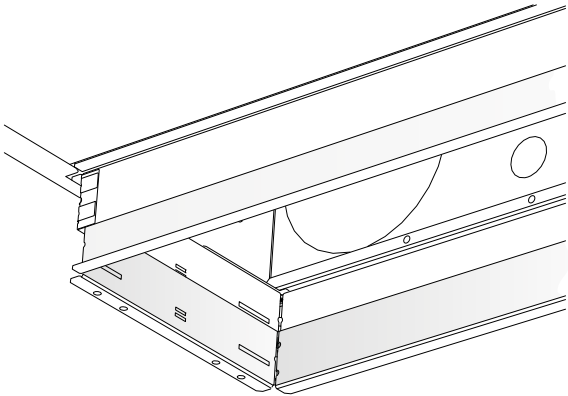
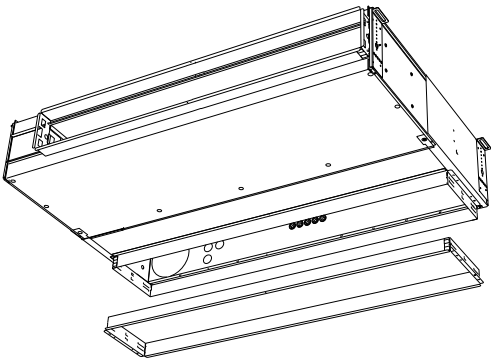
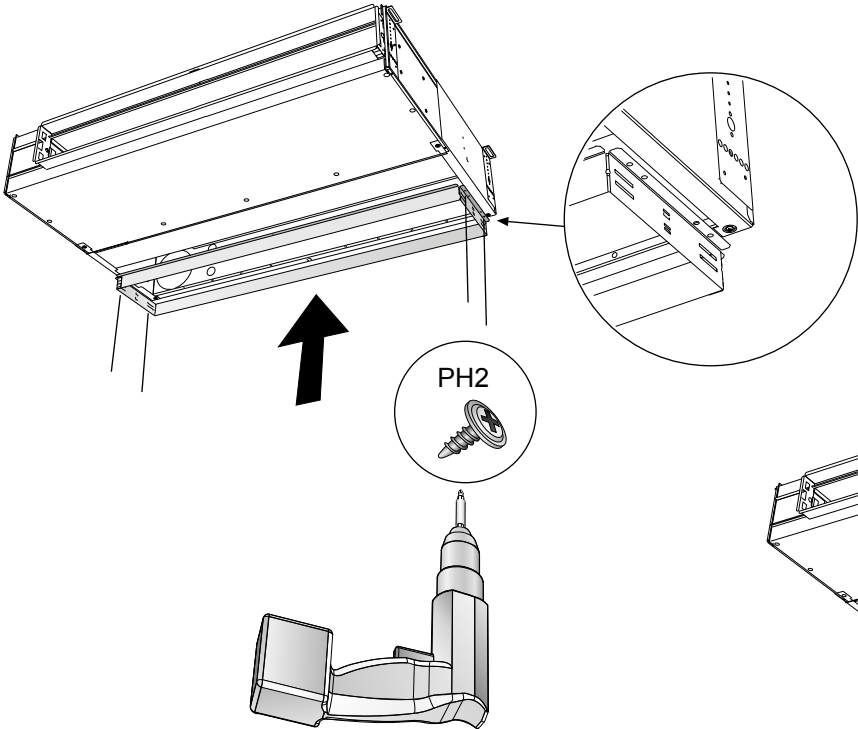
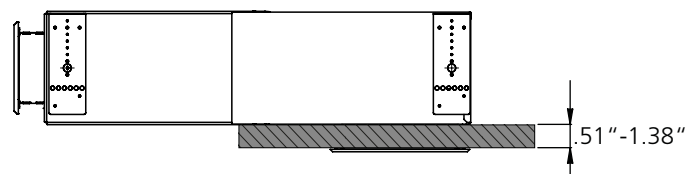
Extra spigot for the supply air



Telescopic spigot for the supply air



Extra spigot for the return air



PARAGON b

Installation - Commissioning - Maintenance

2015-06-23

1.

Room 203
PARAGON 51.2 (1300)
46,6 cfm



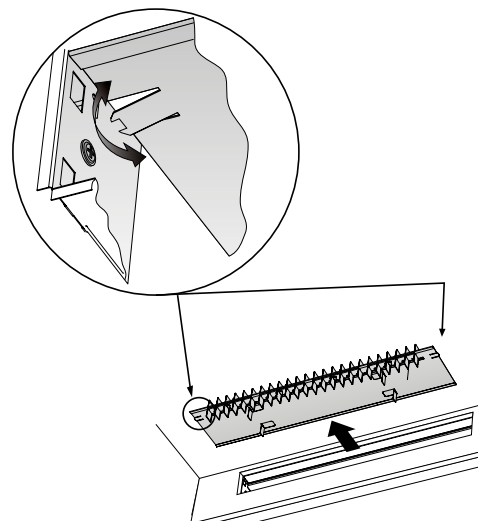
2.

PARAGON 51.2 (1300)

Device	Room	L/H/W	W	Soundpower
500	50-100Pa	15,5-18,4	1,5	1,1
600	50-100Pa	12-20,8	1,7	1,2
800	50-100Pa	12,4-25,1	1,85	1,3
1000	50-100Pa	16,9-28	2,2	1,5
1200	50-100Pa	18,7-31,5	2,5	1,6
1400	50-100Pa	22,8-36,7	2,8	1,7
1600	50-100Pa	18,7-33,8	3,0	1,7
1800	50-100Pa	15,5-30,8	3,15	1,7

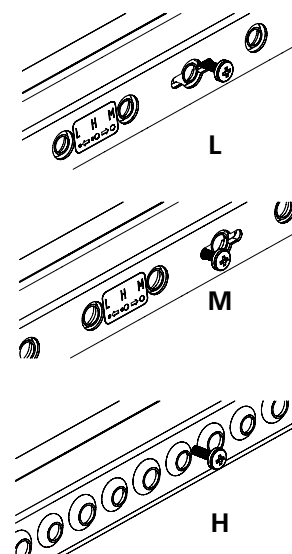
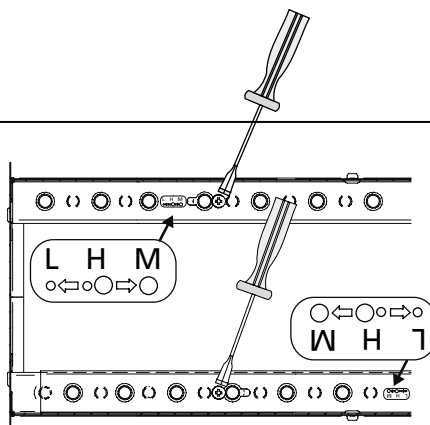
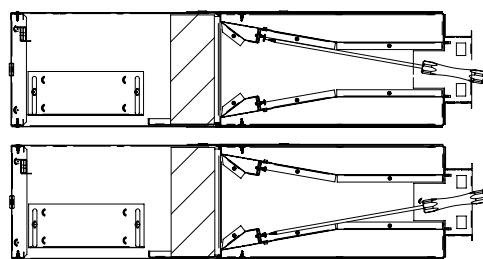
q=34,7-69,5 cfm
k=77,5
Nozzle=L/L

3.



PARAGON b

4.



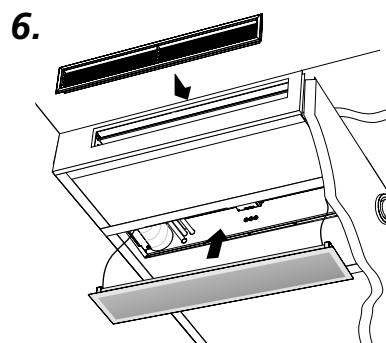
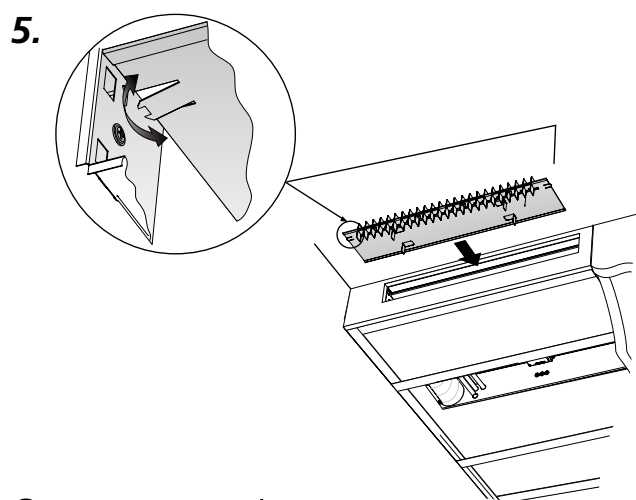
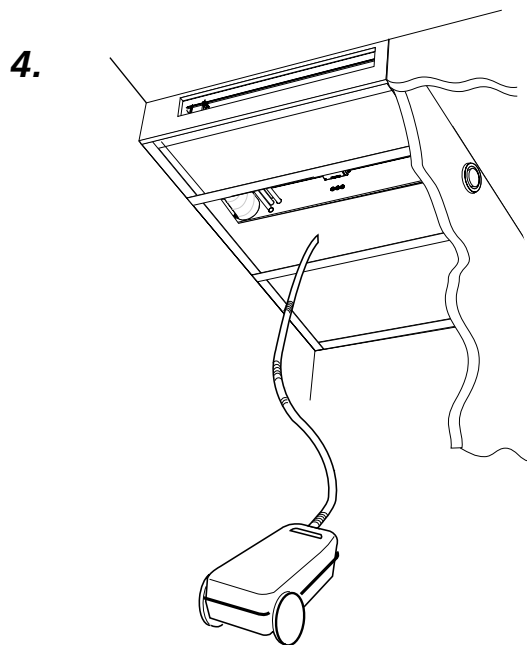
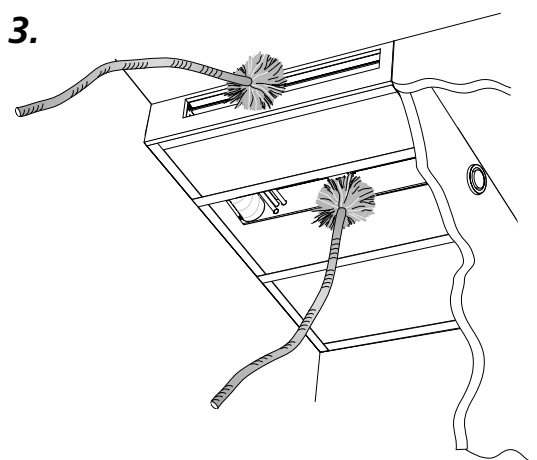
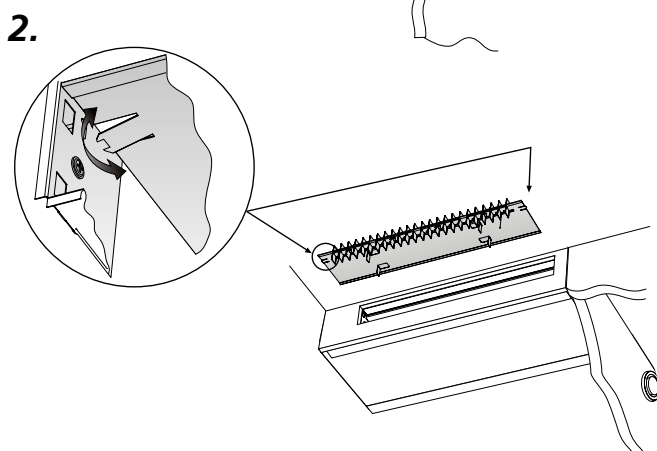
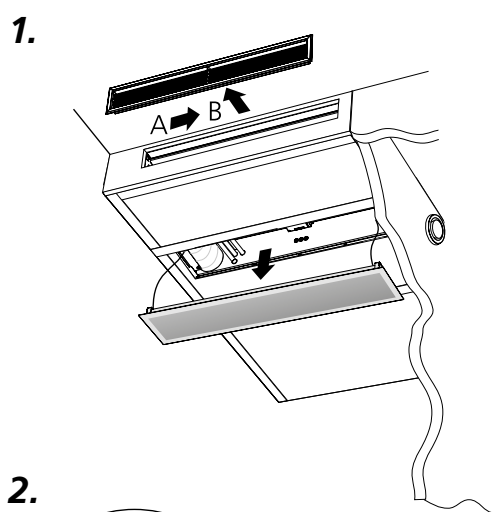
Swegon

Length (in)	pi (in wg)	Airflow (cfm)	K _{pl}	Nozzle
35.4	0.201-0.804	22.5-44.9	50.2	L / L
35.4	0.201-0.804	25.4-50.9	56.7	L / M
35.4	0.201-0.804	28.4-56.6	63.2	M / M
35.4	0.201-0.804	35.6-71.0	79.4	L / H
35.4	0.201-0.804	38.6-76.9	85.9	M / H
35.4	0.201-0.804	48.5-97.0	108.5	H / H
43.3	0.201-0.804	29.0-58.1	64.9	L / L
43.3	0.201-0.804	32.8-65.7	73.3	L / M
43.3	0.201-0.804	36.7-73.1	81.7	M / M
43.3	0.201-0.804	46.0-92.0	102.5	L / H
43.3	0.201-0.804	49.8-99.6	110.9	M / H
43.3	0.201-0.804	62.7-125.6	140.2	H / H
51.2	0.201-0.804	34.7-69.5	77.5	L / L
51.2	0.201-0.804	39.2-78.6	87.5	L / M
51.2	0.201-0.804	43.6-87.5	97.5	M / M
51.2	0.201-0.804	54.9-109.8	122.4	L / H
51.2	0.201-0.804	59.3-118.7	132.4	M / H
51.2	0.201-0.804	75.0-149.8	167.3	H / H
59.1	0.201-0.804	29.5-59.1	65.9	L / L
59.1	0.201-0.804	39.8-79.7	89	L / M
59.1	0.201-0.804	50.2-100.4	112.1	M / M
59.1	0.201-0.804	53.2-106.4	118.6	L / H
59.1	0.201-0.804	63.6-127.1	141.7	M / H
59.1	0.201-0.804	76.7-153.4	171.3	H / H

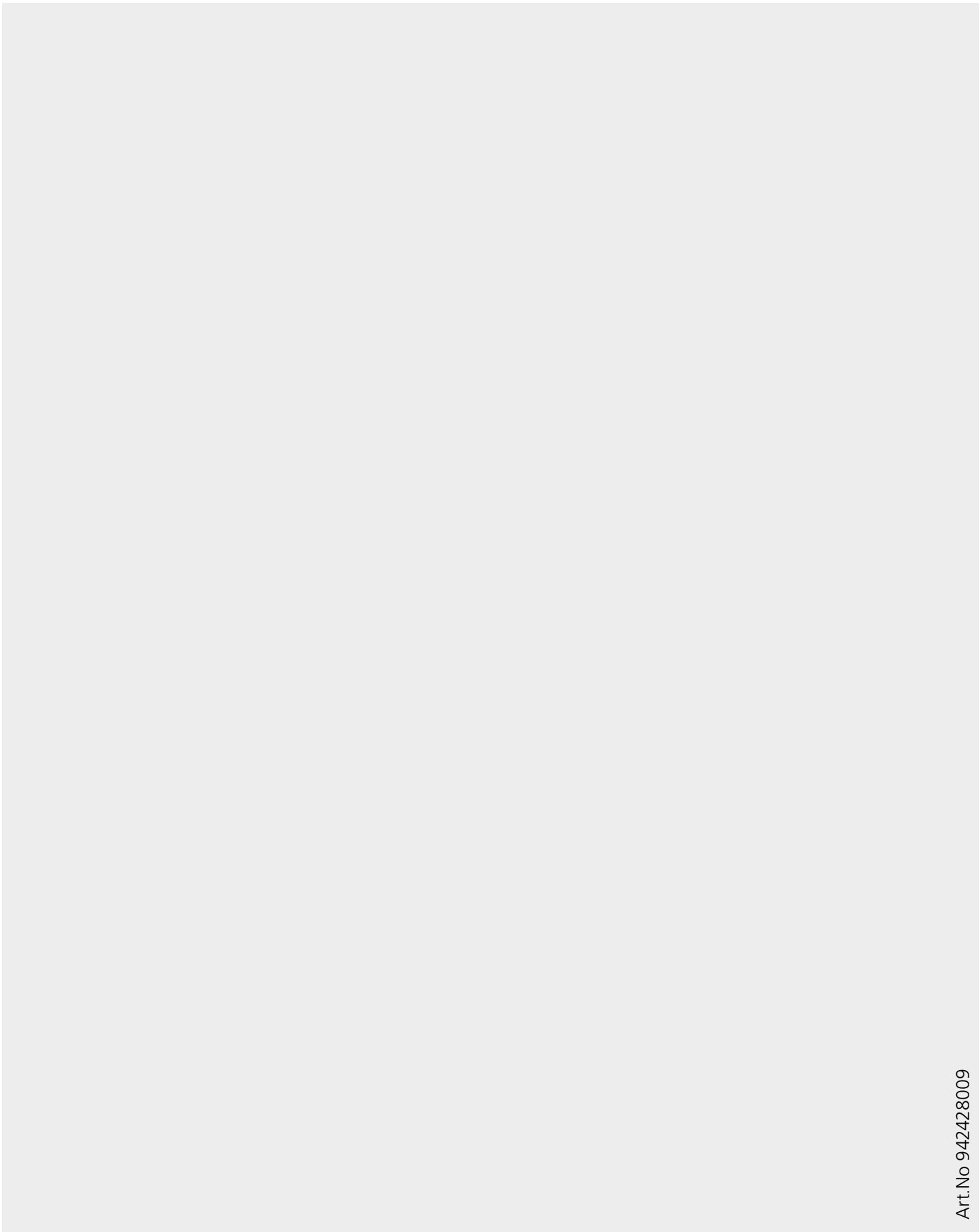
PARAGON b

Installation - Commissioning - **Maintenance**

2015-06-23



PARAGON b



Art.No 942428009