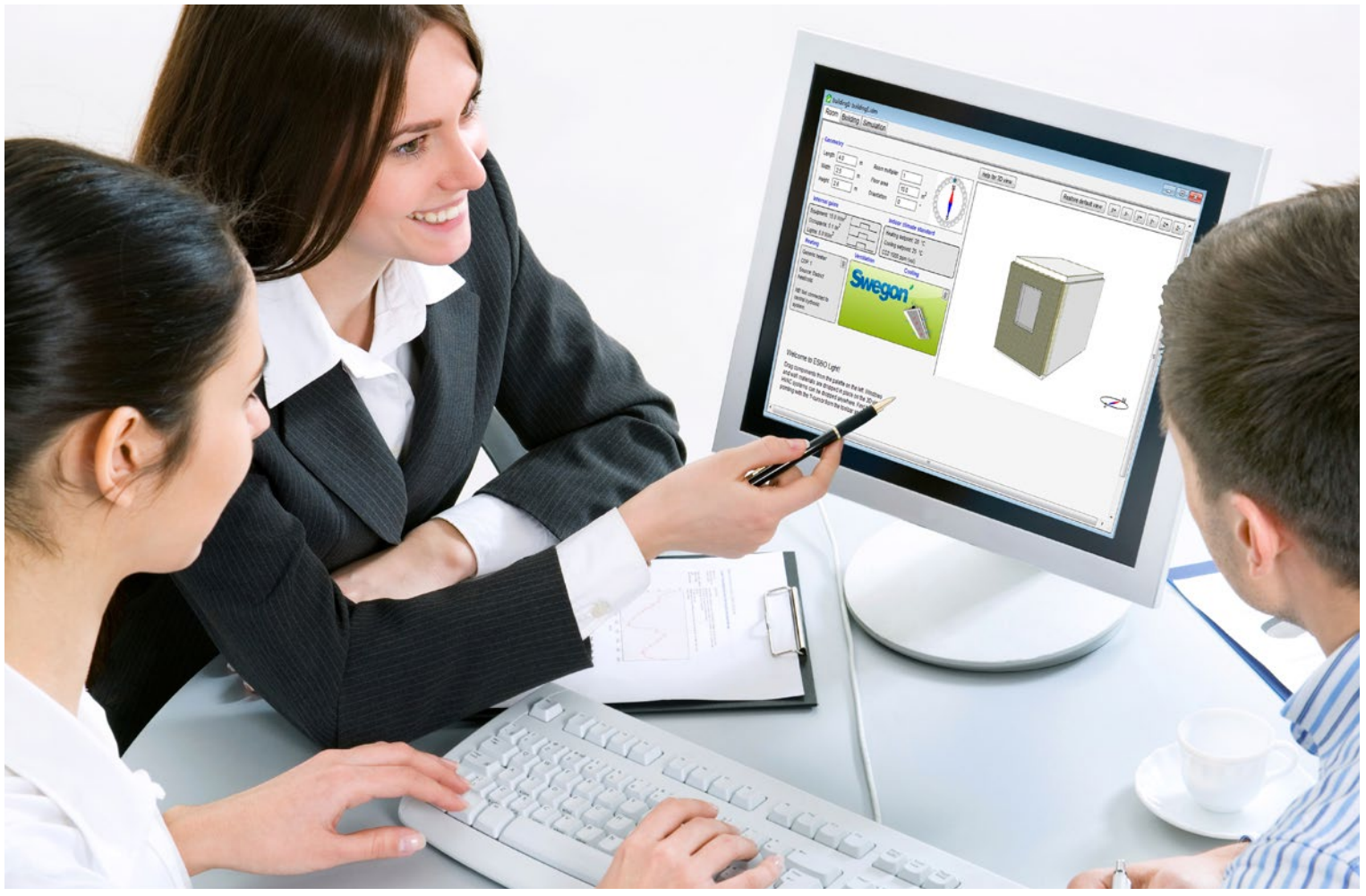


Swegon ESBO



Energy and power demand software,
for the perfect start of your project

ESBO is the new Swegon System Software that helps you from the early stage of the design process, all the way through your project. Within a few minutes the software calculates both the installed power demand and annual energy costs.

Swegon ESBO will aid you during the whole process, from prospect through construction to the finished building, supporting you to deliver the best indoor climate.

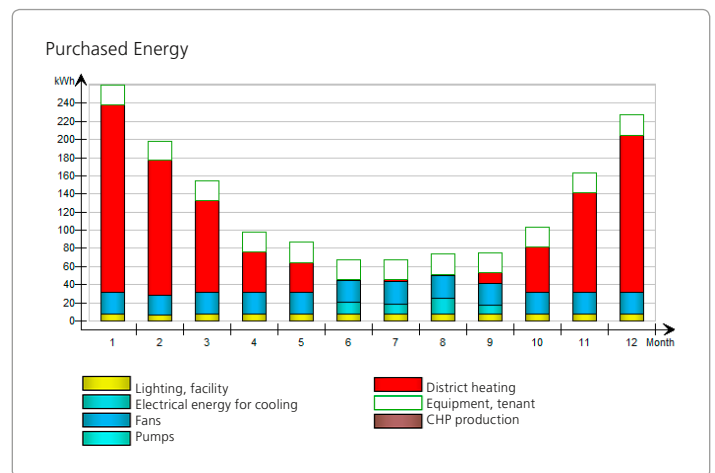
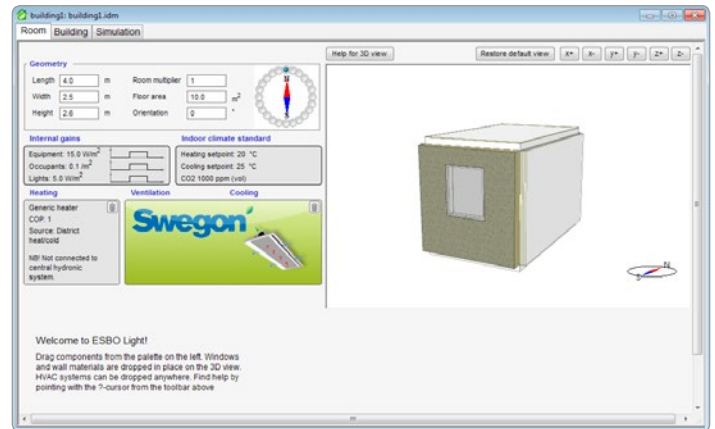
The software helps you to handle all factors surrounding the project such as climate conditions, customer demands, energy requirements, legislations etc.

Swegon ESBO is available in two versions, one free and one paid full version. In the full version it is e.g. possible to calculate several rooms simultaneously in order to facilitate product selection, designing and dimensioning.

Template values from generic air handling units and heat pumps are available to be used when calculating.

Energy and power demand software, for the perfect start of your project

| | Swegon ESBO Light | Swegon ESBO |
|----------------------------|-------------------|-------------|
| Connection to ProSelect | ✓ | ✓ |
| Power calculations | ✓ | ✓ |
| Energy calculations | ✓ | ✓ |
| Non rectangular room | | ✓ |
| Multiple rooms calculation | | ✓ |
| Compare different designs | | ✓ |
| Printout choice | | ✓ |
| External shading objects | | ✓ |



Key facts

- ▶ Capacity-, energy- and temperature calculations
- ▶ 3700 cities / 155 countries
- ▶ Compare air- with waterborne system
- ▶ Compare CAV with DCV system
- ▶ System calculations based on various energy sources
- ▶ Room templates facilitate calculations
- ▶ Calculate comfort and annual energy costs

For more information, welcome to Swegon.com (Resources/Software/ESBO)

